

EXTRACT FROM THE ROYAL SHOW LINCOLN SOUVENIR 1907
WHEN MY GREAT GRANDFATHER SETH ELWIS DEAN WAS
CHAIRMAN OF THE LINCOLN LONGWOOL SHEEP BREEDERS ASSOC. N.

RLHB 2018.



Lincoln Longwool Rams on their native heath, bred by FRED G. BATTLE, Potter Hanworth, Lincoln.

Lincolnshire Longwools.

By FRED G. BATTLE.

LINCOLNSHIRE is famous all the world over for its Old Breed of Sheep, known as the "Lincoln Longwools."

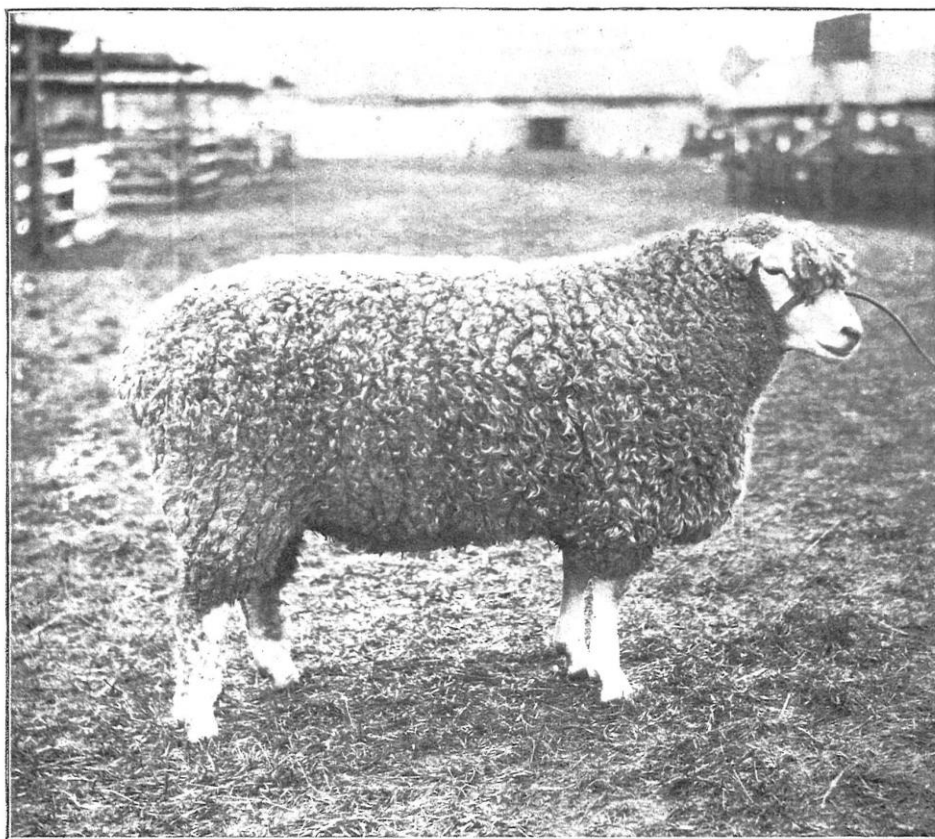
It is truly a magnificent creature, with a grand well covered head, large well-formed body, strong bone, good shoulders, ample loins, well let down legs of mutton, well sprung ribs, depth and squareness of carcass, good girth, and well carried out quarters.

This splendid animal, the heaviest sheep in the British Isles, can scale more than 90 lbs. per quarter, with a fleece of long fine silky curly lustre wool, of sometimes more than 30 lbs. in weight, and often attaining a length of 21 inches. He is the ideal sheep for crossing, greatly favoured amongst

Merinos, giving length and weight of wool and weight of mutton. Indeed, from among the thirty different breeds of sheep in the British Isles, no more majestic or suitable animal can be selected for this purpose.

There is an old saying, "the sheep for the hills and the ox for the plain," but the Longwools are produced on the low-lying peaty, shadeless fens, as well as the bleak limestone heaths and cliffs of Lincolnshire. They are capable of enduring great hardships, succeeding well in exposed situations on nearly all kinds of soil adapted for sheep farming. Their marvellous constitution, fitting them for any country or climate in the world, adds very considerably to their commercial value.

82



Lincoln Shearling Ram, winner of Champion Prize for best Lincoln Ram, Derby, 1906.
Sold for 1,450 guineas. Exhibited by Mr. Henry Dudding.

The cultivation of sheep, with a view to the production of best wool and mutton, has always been the object of careful and skilful Lincolnshire breeders, until the best specimens of

the showyard to-day are worth nearly their weight in gold. Five hundred pounds, one thousand pounds, and even fifteen hundred pounds are not considered excessive prices for champion sheep. One breeder's whole flock of about 700 sheep was recently disposed of for £35,000, but the best Longwool blood is still to be bought.

South America, South Africa, Australia, New Zealand, the States, Canada, Germany, Holland, and Russia are customers who greatly appreciate this valuable old breed of sheep, and the amelioration of the mutton imported from many of these countries can be traced to the *Lincolns*.

The writer would recommend visitors to motor through the pleasant county with its ancient market towns, wide spreading pastures, mossgrown or modernised homesteads, windmills, dykes, and sluices, and call on the flockmaster, with his hearty welcome, as Tennyson describes—

"Grey old grange, or lonely field,
Or low morass and whispering reed
Or simple stile from mead to mead,
Or sheep-walk on the lonely wold."