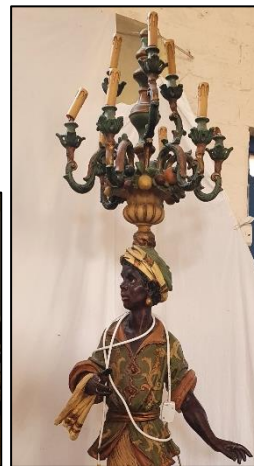


**ROBERT BELL
& COMPANY**

CHARTERED SURVEYORS
AUCTIONEERS
LAND & ESTATE AGENTS

LINCOLN (01522) 538888
WOODHALL SPA (01526) 353333
CONINGSBY (01526) 344434
HORNCastle (01507) 522222

CATALOGUE
OF A SALE BY ONLINE AUCTION OF
***PERIOD & MODERN
FURNITURE & EFFECTS***



TO BE HELD ONLINE
www.UKAuctioneers.com

Auctioneers:
ROBERT BELL & COMPANY
OLD BANK CHAMBERS • HORNCastle • LINGS • LN9 5HY
01507 522222 • auctions@robert-bell.org
www.robert-bell.org

*** * * CATALOGUE * * ***

of

AN ONLINE SALE BY AUCTION

on

WEDNESDAY 24th NOVEMBER 2021

10.00 am

Cover photo – Lots 293-294, 263, 330, 471-475

If you are unable to participate in the virtual sale on Sale Day,
our staff will be pleased to bid on your behalf.
There is no charge for this service.

FORTHCOMING SALES

Period & Modern Furniture & Effects

Wednesday	23rd February 2022
Wednesday	27th April 2022
Wednesday	29th June 2022

Online bidding via *UKAuctioneers.com*

Commission bidding via Robert Bell & Company

For further information visit our website • www.robert-bell.org

OUR CURRENT SYSTEM

We are continuing to hold our auction fixtures in a reduced version and online only, for the duration of 2021.

Catalogue

In the usual way, this will be available to view online with our hosts UKAuctioneers.com. In addition, limited unillustrated paper copies can be made available, on request to the auctioneers.

Bidding

Shall be online or by commission only. There shall be no telephone bids on this occasion.

Online Bidding

Buyers will need to pre-register with UKAuctioneers, please contact them direct for confirmation of terms.

Absentee/Commission Bidding

Commission bids may be left directly with the auctioneers (Robert Bell & Company) up to 9 a.m. on the morning of Sale. UKAuctioneers.com no longer offer this service.

Viewing

Open viewing will be available at The Old School Sale Room, Queen Street, Horncastle, Lincs. LN9 6BG (**Site 2**) on Monday 22nd Nov. 2-5 pm and Tuesday 23rd Nov. 9-12 noon. The majority of goods will be available to view here but items preceding Lot 72 are at **Site 1**, for which an appointment will still be required to view. *(Help with loading may be available, by prior arrangement with the Auctioneers – please discuss this before bidding).*

Car Parking

There is no on-site parking at Site 2 (Queen Street) therefore please use The Wong (free) car park, accessed from the main A153 through Horncastle. There is a pedestrian short-cut through Bryant Close (opposite The Black Swan) leading to Croft Street which joins Queen Street, close to Site 2.

Face Masks

Whilst wearing a mask is now a personal choice, we would encourage all visitors to continue wearing one where able, whilst on our premises in order to keep our staff and each other safe. Thank you for your co-operation.

Payment

We ask wherever possible payment is made by direct transfer or by card over the telephone. Any payment by cash or cheque will need to be discussed and agreed prior with the auctioneers.

Collection, Postage & Shipping

The auctioneers do not offer an in-house postage and packing service. Lots may be collected in person by appointment, however there shall be no collection on Sale Day. It is appreciated that online purchasers will not always find it possible or convenient to collect in person. If you wish to use your own courier, please do so, however we do not accept any courier who is not prepared to pack your item/s. Alternatively, the following specialist provider offers a direct bespoke service and is already familiar with auctioneers in the region:

Pack & Send Lincoln t. 01522 300220 e. lincoln@packsend.co.uk

Pack & Send do not deal in furniture and larger items, thus a purchaser must make their own arrangements by appointment with the auctioneers for the collection of furniture.

Please Note: All lots are to be collected within **7 days** of the Sale date.



Photographs of all lots available at www.UKAuctioneers.com



CONDITIONS OF SALE

Please read before bidding

1. The highest bidder shall be the buyer. Bidding shall be regulated by the Auctioneer. The Auctioneers reserve the right of rejecting any bid, bidding for, withdrawing, consolidating, dividing or altering the order of lots.
2. Buyers Premium is chargeable on purchases at a rate of 15% plus VAT under the Auctioneers' Margin Scheme, subject to a minimum fee of £1 plus VAT per lot. There is no VAT on the lots themselves and VAT cannot be reclaimed either on the lots or on the commission.
3. Each lot, at the fall of the hammer, shall be at the sole risk and expense of the buyer and shall be paid for and removed within 7 days of the sale. However, no lot shall become the property of the buyer, or be removable until paid for. No items shall be removed on Sale Day.
4. The auction house does not offer an in-house postage and packing service. Lots may be collected in person by appointment (except on Sale Day), or alternatively buyers may use a courier service. The auctioneer will not accept any courier who is not prepared to pack the item/s they collect.
5. Terms: Payment by direct transfer or by card over the telephone. (**NB. no credit or business debit cards will be accepted**). Any payment by cash or cheque will need to be discussed and agreed prior with the auctioneers.
6. A buyer will not be allowed to retract his bidding. The Auctioneers will not recognise the transfer of any lot from one buyer to another nor make any alteration in the sale book in respect thereof.
7. The Auctioneers are acting only as Agents, and have no personal knowledge as to the correctness or otherwise of the description of the property offered for sale. Each lot is sold with all defects and errors of description, if any. The purchaser is deemed to have inspected the lot he buys.
8. The Auctioneers shall be the sole arbitrators in all matters of dispute relating to these conditions, and their decision shall be final and binding.
9. *This auction is not required to comply with the requirements of the Members Accounts Regulations 1993 of the Royal Institution of Chartered Surveyors. No monies paid to the auction are covered by any scheme for the protection of clients' money operated by the Royal Institution of Chartered Surveyors.*

1. Quantity of fishing tackle incl. cane, spinning and fly rods; Foster Bros Ashbourne. various spinning reels and a vintage cane shooting stick
2. Quantity of garden tools incl. Kent and Stowe half shaft fork and trowel, Draper spade, hedge knife etc
3. Pair of Halfords 2 Tonne, as new axel stands and a pair of tressles
4. Britool socket set No NA760C
5. 4 Bins of workshop tools incl. spanners, chisels etc
6. 4 Bins and baskets of workshop tools incl. drill bit sets, Draper spirit level, bit and brace etc
7. A vintage joiners tool box incl. tools
8. Set of steel stationery drawers and a galvanised bucket
9. 3 Bins of workshop accessories incl. hacksaw blades, allen keys, jump leads and a cap containing numerous enamel badges
10. A cased 18V Nutool multi-function saw NXCC700
11. Qty of plastic workshop bins and steel racking
12. Pair of car ramps
13. Set of 8 red upholstered stacking chairs
14. 4 various clay chimney pots
15. A pair of simulated stone large boot form garden planters
16. A simulated stone rectangular garden planter with embossed mask detail
17. 2 pairs of cylindrical simulated stone garden planters
18. A qty of simulated stone figures and a bird bath
19. A simulated stone classic figurine carrying a ewer, approx. 38" tall
20. Set of 4 simulated stone cylindrical garden planters
21. A simulated stone bird bath
22. A pair of modern simulated stone heraldic lion figures
23. A simulated stone bird bath
24. A metal garden set comprising a circular table and 4 folding chairs, 2 with seat pads
25. Heavy duty hand lawn aerator

26. Mountfield RV150 petrol rotary mower and an electric Flymo garden vac
27. Murray Ride-on 30" mower
28. Haemmerlin metal garden roller
29. Clarke solid fuel burner and chimney
30. 2 sets of step ladders, aluminium and tubular steel
31. Wickes extending aluminium ladder
32. 2 sets of step ladders, aluminium and tubular steel and a work mate
33. Lyte wooden extending ladder, approx. 22' extended
34. Wooden step ladders
35. Ladies Apollo bicycle
36. Gents Gemini bicycle
37. Heavy duty gated fender
38. 2 Total Oil Banjo signs in French
39. Vintage golf clubs and bag and vintage carpet sweeper
40. Qty of tools incl. taps and dies, wood working gauges etc
41. Collectors lot incl. vintage carbide lamp, blow torches, tennis rackets etc
42. 2 sets of ceiling lights in glass and brass lustre
43. Qty of Christmas decorations and a modern spice rack
44. Qty of vintage OXO tins, stationery drawer, shoe shine box etc
45. 3 boxes of glass and weighted tableware incl. decanters, tureens etc

FURNITURE

46. White and gilt painted wicker bed side cabinet and painted wall mirror
47. Victorian mahogany mirrored wardrobe door approx. 74" x 36" (crack to the plate)
48. 4 pieces of modern metal furniture incl. mesh fire screen, wrought occasional table etc
49. 3 pieces of furniture comprising mahogany 2 tier drop leaf trolley, wall mounted glazed mahogany corner cabinet and rectangular walnut occasional table on cabriole legs
50. A reproduction mahogany sofa table
51. A mid-20th century serpentine fronted walnut dressing table on cabriole legs

52. An early 20th century astragal glazed mahogany bureau bookcase
53. Distressed pine blanket box with painted inscription 1874
54. Mid-20th century mahogany glazed bookcase with sliding doors over a cupboard base
55. Mahogany rectangular side table
56. A rectangular oak occasional table on turned splayed legs and stretches and an Edwardian mahogany pie crust 2 tier occasional table (some damage)
57. Early 20th century cane metamorphic steamer chair
58. A pair of red upholstered cinema seats
59. A Victorian elm elbow chair and a modern beech bar stool with strung seat
60. A child's elm school chair, a Victorian spindle back bedroom chair and spindle back rocking chair
61. A pair of RAF issued bedside tables
62. Three 20th century open book cases, 2 mahogany 1 pine
63. An Edwardian mahogany wall mounted book case with glazed upper cupboard and lower drawer
64. An Ercol style teak framed hall wall mirror with bevelled plate and lower shelf and oak framed rectangular mirror
65. An early 20th century oak, bow fronted utility sideboard
66. Large carved dark oak fire surround approx. 62" wide x 57" tall
67. Edwardian brass single bed frame with finial decoration and irons
68. Double modern heavy metal mesh bedframe with gothic arch and fleur-de-lys decoration
69. Victorian brass tubular double bedframe
70. Modern pine cot
71. Large early 20th century mahogany framed, wall mounted glazed collectors display cabinet and a modern wall mounted collectors display cabinet
72. Victorian mahogany glazed library bookcase approx. 60" wide x 89" tall x 41" deep

FURNITURE (continued)

(Site 2)

73. A pair of wooden slatted folding chairs
74. An oak side cabinet with open shelves, drawers, cupboards and carved panels
75. Victorian mahogany glazed bookcase with base of 2 drawers and cupboard

76. Edwardian mahogany bow fronted glazed display cabinet with relief banding
77. Modern pine double wardrobe
78. Early 20th century oak dressing chest with 2 over 2 drawers
79. Modern 4 tier tall open bookcase
80. Vintage narrow pine chest of 7 graduating drawers with ivorine pull handles
81. Early 20th century hall stand with mirrored back, side stick slots with drip trays and a lift bench seat
82. Early 20th century oak 4 tier open book case with relief carving
83. Oak glazed side cabinet with leaded doors and cupboard base
84. Modern pine dresser with glazed upper cupboard over a base of 2 drawers and cupboard
85. 19th century mahogany bureau, fall front enclosing a fitted interior over a base of 4 graduating drawers with bun handles and bracket feet
86. Modern oak dresser with glazed upper cupboard over drawers and single cupboard
87. Modern oak dresser with upper plate rack over a base of fitted drawers and cupboard
88. Edwardian mahogany oval wind out dining table on cabriole legs to ball and claw feet with 1 spare leaf
89. Modern oak dining suite comprising a rectangular extending table and set of 6 (4+2) ladder back chairs
90. Circular pine pedestal kitchen table with 5 pine pierced splat back chairs
91. Modern pine rectangular kitchen table with single drawer on turned legs
92. Set of 4 (2+2) modern beech splat back kitchen chairs
93. Modern circular tiled top, extending kitchen table and 4 chairs
94. Modern pine circular pedestal kitchen table
95. Set of 4 beech wheelback kitchen chairs
96. Ercol plate rack
97. 19th century oak side cabinet with panel back, turned supports over 3 frieze drawers and a cupboard base
98. Edwardian mahogany rectangular dining table on ring turned legs to brass castors
99. Set of 6 Edwardian mahogany framed dining chairs with spell bands and sprung seats on turned front legs

100. Two red leather camel stools
101. Modern bentwood cloak stand
102. Set of 4 Victorian deep seated mahogany framed dining chairs, reupholstered
103. Two sets of pine, open wall mounted shelves
104. 19th Century mahogany bedside cabinet with drawer and cupboard
105. Early 20th century elbow chair with carved panel, upholstered back and seat and bobbin turned stretcher
106. Rectangular oak framed upholstered stool on turned legs
107. Reproduction mahogany dummy fronted cabinet
108. Edwardian mahogany Hepplewhite style dining chair
109. Late Victorian mahogany framed elbow chair with pad seat and back and open scrolling arms
110. Pair of Edwardian oak elbow chairs with carved scrolling arms, pad back and seats to turned legs and stretchers
111. Ornately carved dark oak, upholstered bedroom chair
112. Reproduction mahogany whatnot with fine turned supports
113. Circular pub table with cast pedestal base
114. Set of 8 large reproduction Chippendale style pierced splat back dining chairs with drop in seats (1 seat missing)
115. Reproduction yew framed captain's chair with green leather, buttoned upholstery
116. Early 20th century oak hall table with single drawer and pie crust edging on barley twist legs
117. Early 20th century small oak oval gate leg table with barley twist legs
118. Modern oak 4 tier open bookcase
119. Ercol Old Colonial dresser with plate rack over base of cupboard and drawers
120. Modern oak bureau with fitted interior over cupboard base
121. Modern pine chest of 3 drawers
122. Pair of reproduction mahogany Hepplewhite style pierced splat back dining chairs
123. Modern solid oak nest of 3 rectangular tables
124. Early 20th century pine straight front chest of 2 over 2 drawers with bun handles
125. Modern pine, straight front chest of 2 over 5 drawers with bun handles

126. Reproduction pine table top medicinal cabinet
127. Modern pine, straight front chest of 5 drawers
128. 20th century oak, linen fold bureau with a base of 3 drawers
129. Reproduction walnut lowboy with 1 over 3 drawers on cabriole legs with shell motif
130. Oak dummy fronted hi-fi cabinet
131. Ercol Windsor sideboard having 2 cupboards, internal cutlery drawer and drawer to the base approx. 45" tall x 19" deep x 32" tall
132. Early 20th century oak square stick stand with drip tray
133. Early 20th century mahogany planter on square tapering legs to spade feet
134. Modern oak narrow 3 tier bookcase
135. Pine pot cupboard with upper drawer
136. Two footstools in mahogany with rattan seat and oak with a strung seat
137. Victorian mahogany rectangular 2 tier stand on turned supports (some damage)
138. Modern mahogany oval extending dining table
139. Early 20th century gold painted wicker nursing chair with sprung seat
140. Victorian mahogany rectangular occasional table with bobbin turned legs and stretcher
141. Modern beech circular stool on 4 turned legs
142. Oak D-ended gate leg table on barley twist legs
143. Set of 5 modern leather effect and studded upholstered dining chairs
144. Early 20th century mahogany piano stool with carved and scrolling decoration
145. Oak 2 tier drop leaf tea trolley
146. Painted pine blanket box on raised feet
147. Victorian walnut fold over games table with circular baize lined interior with bobbin turned legs
148. Mahogany mounted cloak rack with hooks formed from dinner forks
149. Modern pine dressing table
150. Early 20th century oak side board with carved panels, a central bank of 2 drawers, flanked by cupboards with a cellarette and barley twist stretcher (damaged)
151. Victorian mahogany straight front chest of 2 over 3 drawers with bun handles and bracket feet

152. Child's elm stick back country chair with scalloped seat
153. Wicker and cane oval butler's tray
154. Early 20th Century oak side cabinet having 2 drawers over a cupboard base with floral relief decoration
155. 18th century oak, large plank topped coffer with 4 fielded panels to the front approx. 59" wide x 22" deep x 27" tall
156. Early 20th century mahogany framed upholstered desk chair with distressed leather cover
157. Reproduction set of mahogany metamorphic library set
158. 19th century mahogany framed upholstered elbow chair with turned and fluted supports
159. Modern oak nest of 3 tables and a carved hall chair
160. Mahogany towel rail with barley twist supports
- 160A. A retro serpentine fronted cocktail cabinet with internal drawers
161. Reproduction mahogany side cabinet with drawer over cupboard base and shell motif
162. Two reproduction marble topped empire style bedside stands
163. 20th century mahogany rectangular occasional table with turned stretchers
164. Modern solid oak 2 tier coffee table on turned legs
165. 19th century mahogany rectangular side table with single drawer on faceted legs
166. Early 20th century oak fender with bobbin turned supports
167. Edwardian mahogany rectangular 2 tier buffet on ring turn supports to brass castors
168. Solid oak rectangular coffee table
169. Reproduction ornate giltwood empire style, salon suite comprising settee and 6 chairs (4+2)
170. Gordon Russell mid-20th century teak rectangular dining table with Gordon Russell Ltd badge to the stretcher approx. 48" x 36.5"
171. Small modern oak cabinet with relief carved doors
172. Modern oak side cabinet with leaded glazed upper cupboard
173. 2 reproduction circular, pie crust wine tables
174. Modern ornate console table with support in the form of 2 putti
175. Early 20th century light oak dressing chest of 2 drawers

176. Three pieces of painted furniture, 2 dressing tables and a bureau
177. Rectangular hardwood stand with relief top and turned supports
178. Early 20th century oak table with barley twist legs
179. Victorian mahogany rectangular side table with 2 frieze drawers on barley twist support to a baluster form stretcher
180. Oak table top book rack
181. Hexagonal 2 tier decorative lamp table with painted decoration on turned legs with shaped apron
182. Ercol Windsor sideboard with lattice work doors and fitted inner draws
183. Reproduction mahogany oval 2 tier occasional table and a lacquered chinoiserie wotnot
184. Victorian mahogany straight front chest of 2 over 2 drawers with brass drop handles, ivory escutcheons on bracket feet (some bleached)
185. Early 20th century oak mirror backed sideboard, with 2 frieze drawers over cupboards with carved panels and cellarette
186. Early 20th century oak glazed bookcase on cupboard base on turned feet
187. Late Victorian mahogany bureau bookcase with astragal glazed doors and Greek key frieze over a base of full fronted and graduating drawers
188. A modern pine 5-piece bedroom suite comprising double wardrobe, dressing table with stool, single bedhead, bedside cabinet and chest of 5 drawers
189. Edwardian oak wall mounted cloak rack with bevelled edged mirror, 2 panels and 6 hooks (1 hook damaged)
190. Reproduction oak side cabinet with relief carving, 2 shelved cupboards over 2 Drawers on turned and carved bulbous legs
191. Edwardian mahogany glazed display cabinet
192. Early 20th century mahogany wall mounted cabinet with open shelves and lower cupboard
193. 19th century mahogany straight front chest of 2 over 3 graduating drawers with brass drop handles and bracket feet
194. Mahogany 4 tier open wall shelf with barley twist supports
195. Victorian mahogany bow fronted chest of 2 over 3 graduating drawers with box wood stringing, brass droop handles on bracket feet (some veneer damage)

COLLECTORS CARDS, RECORDS, STAMPS & COINS etc

196. A Sputnik style 7" record rack and quantity of un-sleeved 7" singles, including Elvis Presley, Dionne Warwick etc

197. Vinyl - a quantity of 7" singles, many 1980's
198. Vinyl - a quantity of LP's - many Elvis and 1970's
199. Vinyl - a quantity of 7" singles many 1980's
200. The Complete Oxford English Dictionary
201. Box of c.13 motor racing books including Jim Clark, Graham Hill etc
202. Box of motoring ephemera and vintage road maps
203. Large quantity of predominantly loose world stamps, philately items etc
204. Quantity of Beatles ephemera including Fanzines etc
205. Bundle of 1980's Beano comics
206. Art Deco Bakelite table top book rack, The Children's Encyclopaedia and leather-bound volume of The Life of Christ by Revd. J Fleetwood
207. Two boxes of 'as new' Horncastle area postcards
208. Local ephemera including a Parish, Stafford, Walter & Bell auction sale catalogue 1910 of various land in Hagworthingham, Ashby Puerorum and Hemingby, damaged but with plans and a Marshall Bros, 25 Bridge Street, Horncastle paper carrier bag
209. Box of loose world stamps and an album of First Day Covers and franked Victorian stamps, several related to Alford, Lincs
210. No Lot
211. Wallets of various GB stamps with Queen Elizabeth II part sheets
212. Quantity of GB stamps predominantly loose including Victorian
213. A wallet containing approximately 137 album mounted Liebig cards predominantly of wildlife including miscellaneous, Garden Life, cigarette cards and a silk
214. No lot
215. Six albums of part and complete cigarette cards including British American Tobacco, Channel Islands; Wills' Our King and Queen etc
216. Five albums of part and complete tea and cigarette cards including Wills' Garden Birds; Wild Flowers; Brooke Bond Birds; Disney etc
217. Two Stanley Gibbons presentation souvenir albums of world stamps commemorating the wedding of Charles and Diana 1981
218. Two albums of Royal Mail Prestige stamp books, 2001 - 2015 plus an empty album
219. Five albums of Royal Mail GB stamps including presentation books
220. Three albums of GB stamps, mint sets 1969 - 1987

- 221. Album of GB stamps, mint sets 1936 - 1968
- 222. Two First Day Covers, a framed Stirling Moss 50th anniversary of the 1955 British Grand Prix and a signed Spike Milligan 1997
- 223. A Victorian mahogany writing box containing a quantity of GB pre-decimal coins and crowns
- 223A. A wallet containing approximately twelve bank notes including seven Japanese Government 10 cents; Reichsbank note 50,000, 20,000, 10,000 etc
- 224. Quantity of loose predominantly GB pre-decimal coins, ten-shilling note etc
- 225. Three Titanic commemorative post cards
- 226. Various GB crowns and loose pre-decimal coins
- 227. Australian Commonwealth Military Forces cap badge, "One Heart, One Way" cloth crest badge etc.
- 228. A quantity of approximately eight silver, enamelled and other shooting medals, many awarded to R.C. Peppard in the 1940's

CHINA, GLASSWARE & ORNAMENTS

- 229. A pair of large oriental style colourful baluster form vases, with relief decoration of dragons, c. 20" tall
- 230. A Dexam International large ceramic sherry barrel, Brown and Panks Cyprus Sherry
- 231. Two resin African wildlife groups, a Juliana giraffe, elephant and child and two cheetahs
- 232. A collection of six African 'Soul Journey' figures (one damaged) and a Masai style vase
- 233. Two oval blue and white Staffordshire meat plates including Primrose pattern
- 234. A mixed lot comprising a Whitefriars style kingfisher blue 'mallet' vase after Geoffrey Baxter; Sheffield small plated galleried tray with serpentine border; Coalport Ming rose dish etc
- 235. Two Royal Crown Derby animal paperweights, a squirrel and a mouse
- 236. Three various Royal Crown Derby Imari covered vases
- 237. Two pairs of Royal Crown Derby Imari bells
- 238. Three Royal Crown Derby bird paperweights, owl, robin and kingfisher
- 239. Six pieces of Royal Crown Derby Imari tableware comprising a pair of cruets, two side plates and two tea plates with four plate stands
- 240. A pair of Royal Crown Derby Imari eggs on stands
- 241. Three Royal Crown Derby bird paperweights, two ducks and a finch

- 242. Four various Royal Crown Derby animal paperweights, platypus, koala bear, cat and a deer
- 243. A quantity of Wedgwood Blue Delphi and Wild Strawberry ornamental and dinnerware including a 3-piece coffee set, tureen, pair of baluster vases etc, c. 25 pcs.
- 244. A quantity of Royal Albert Old Country Roses including two covered jars, photo frame, fruit bowl, trinket dishes etc. c. 23 pieces
- 245. A collection of seven Royal Doulton lady figurines, three large, four miniature including Country Roses, Happy Birthday, Eleanor etc
- 246. A collection of seven Coalport lady figurines in gloss and bisque finish, four larger, three smaller including Birthday Wishes, Thank You, Summer Love etc
- 247. A quantity of modern Aynsley ornamental ware including Cottage Garden, Pembroke, Little Sweetheart etc comprising vases, cake knife and plates, c. 19 pieces
- 248. A collection of seven Lilliput Lane and other cottage ornaments
- 249. Two stoneware jelly moulds, two floral trinket dishes and a quantity of vintage ceramic sandwich platter labels
- 250. A collection of Royal Crown Derby, Derby Posies ornamental ware etc, c. 12 pieces
- 251. Seven pieces of Poole vintage studio pottery, comprising two serving dishes and five various plates (one chipped)
- 252. A collection of Royal Doulton blue and white Norfolk dinnerware including coffee cups and saucers, various plates and fruit bowl, c. 14 pieces
- 253. A quantity of ornamental cranberry glassware including bowls, vases, beakers etc, c. 13 pieces
- 254. A sealed Wade pottery ships decanter of British Navy Pusser's Rum, with stopper and small decanter
- 255. Four decorative coloured glass jugs, two frilly cranberry and two large blue green faceted baluster jugs with rope twist handles
- 256. Three old Alford Lincolnshire bottles, two Soulby & Sons and G. Boulton with marble stopper
- 257. A quantity of mottled and coloured glass light shades
- 258. A quantity of ceramic including a pair of Staffordshire style greyhounds, Imari style dinnerware, Chinese blue and white plate etc
- 259. A quantity of Victorian dinnerware, meat plates etc
- 259A. Victorian lustre tea set

METALWARE, COLLECTORS ITEMS, CLOCKS etc

260. A collection of African and other hardwood carvings, masks etc c. 11 pieces
261. Three African carvings, two giraffe wall masks and hunter figure, c. 21" tall
262. Two African framed wall hangings
263. A pair of unusual highly decorative resin, electrified candelabra standard lamps, in the form of colourful North African figures, c. 7' tall
264. Two copper and brass powder flasks, with embossed decoration of hunting scenes and foliage
265. Two 19th century copper cylindrical measures, a pint and a quart
266. A quantity of ornate brass door furniture, including knobs, plates, letterbox surrounds etc
267. A pair of silver-plated stirrup cups in the form of riding boots and 2 pairs of spurs
268. An EPNS 3-piece tea service comprising teapot, cream and sugar in baluster form with embossed and fluted decoration
269. Metalware comprising an EPNS spirit kettle, old scales and boxed bone handled tea knives
270. A pair of EPNS barley twist candlesticks on circular pedestal bases
271. Miscellaneous metalware including a City Bank pierced money box, South Staffordshire regimental cap badge etc
272. Five 19th century servant's sprung bells
273. Metalware including plated ware, cruet stand and bottles, basket form wine pourer, galleried circular tray, 2 ornate reproduction brass inkwells etc
274. Two French spelter bucolic figures, La Moissonneuse and Le Semeur
275. A reproduction small cast metal doorstop in the form of an Edwardian lady golfer
276. A quantity of EPNS tableware including a three-piece tea service, hot water jug, comports etc and a brass fire poker
277. A box of EPNS ware, a good quantity, including various tableware, specimen vases etc
278. A box of EPNS ware, a good quantity, including various tableware, specimen vases etc
279. No lot
280. Two Indian brass electrified wall sconces in the form of cobras
281. A good quantity of Sheffield Community Plate cutlery

- 282. Two cases of six bone handled fruit and tea knives
- 283. A quantity of plate and metalware, including teapot, hot water jug, cutlery etc
- 284. Three soapstone carved and pierced figures of monkeys and bowls
- 285. Collectors' metalware including Huntley & Palmer biscuit tins in the form of books, oil lamp, pewter salver etc
- 286. A quantity of lace tableware, embroidery threads etc
- 287. A case of fishing flies
- 288. Cobblers' tools, leather off-cuts and a cleaning kit
- 289. A boxed 1960's Duograph engineers drawing set and other drawing tools
- 290. A box of 1960's crayons and paints
- 291. A set of French Dyon oak and enamelled shop scales, with various graduated brass weights
- 292. Two boxes of vintage bottled, commemorative ales etc
- 292A. A Victorian mahogany writing box with mother of pearl label to the lid, J Clarke and two ebony carvings
- 292B. A collection of treen boxes, Russian dolls etc
- 292C. Four various artists vintage easels including Winsor & Newton and 'The Cramore'
- 293. Case of vintage red wine, comprising 6 bottles of Chateau Giscours Margaux, 1979 x 2, 1980 x 2, 1981 x 2: 5 bottles of Chateau de Pez 1979 x 3, 1980 x 2 and a bottle of Le Grand Pot de Beaujolais-Villages 1983
- 294. Mixed case of vintage red and white wine comprising 5 bottles Chateau Haut-Beychevelle Gloria, 1977; 3 Chateau Roquebrune 1978; Chateau Canteloup 1979, 2 Le Pait de Macon-Vire 1983 & 1985 and a bottle of Chateau de Puch Monbazillac 1980
- 295. Collection of approximately 27 various walking sticks and canes, one with silver mount
- 296. 2 bags of vintage lawn bowls
- 297. Large wooden stirring spoon, approx. 49" long
- 298. Simmons model 6340 telescope & tripod with manual
- 299. Wooden box of leather craft tools, leather swatches etc
- 300. 3 collectors' vintage items, Canon cased cine camera, Pifco hair dryer and Kenwood food mixer
- 301. Vintage small box suitcase and fur stoles

302. Various ladies vintage evening bags and fur stoles
303. Box of various collectors' tins and Wills' cigarette carton
304. 5 various Olympus & Canon 35mm and digital cameras
305. Smokers' ephemera including pipe rack, pipes, cleaners etc
306. Box of vintage 35mm and other cameras
307. Box of vintage 35mm cameras
308. Cased vintage Zenit 35mm camera, tripod, bag etc
309. Vintage Yashica-E boxed camera, tripod and other vintage cameras
310. Cased pair of Tasco Zip binoculars, 10 x 50mm with lens caps and small pair of field glasses
311. JVC compact VHS camcorder with bag
312. Vintage Praktica MTL3 35mm camera and other digital and 35mm cameras
313. Vintage cased vanity set
314. David Peterson gilt brass carriage clock and 2 circular brass bedside clocks
315. Small oak framed aneroid barometer
316. Small slate mantle clock
317. Boddington & Co oval form brass carriage clock in original travel case (front glass missing)
318. Two early 20th century oak and mahogany cased mantle clocks
319. Victorian large slate mantle clock with marble edging and black and gilt dial
320. Empire No 2 Vintage typewriter
321. Case of stereoscope slides predominantly views of European cities
322. Halina vintage 35mm camera and a Fujika 35mm camera
323. Zenit-E vintage 35mm camera
324. London silver mounted riding crop and Lincolnshire regiment swagger stick
325. Opium pipe etc
326. Cased Buisson clarinet
327. Velvet hat by Wahida and Co Singapore in original labelled box
328. Collectors lot comprising metal cash tin, leather cased tape measure and 2 pairs of vintage binoculars

- 329. Wire mesh Rowntree Mackintosh shop display basket
- 330. 3 vintage Union Jacks mounted on pine poles and extra pole
- 331. Large vintage Union Jack flag
- 331A. Artist's portfolio case
- 331B. Savana cased banjolele
- 331C. Minimax vintage fire extinguisher
- 331D. Cloth backed skeletal anatomical wall chart approximately 21" x 62"
- 332. Oak cased American mantle clock
- 333. Walnut cased bracket clock with inlay and gilded dial
- 334. Oak longcase clock with pedimented hood enclosing a brass dial, 30-hour movement by Helm Ormskirk
- 335. Early 20th century oak framed aneroid barometer
- 336. Early 20th century oak framed aneroid barometer
- 337. Mid-century oak cased domed grandmother clock

RUGS

- 338. Pink floral woollen rug, 48" x 72"
- 339. Chinese pink and cream woollen rug, 60" x 96"
- 340. Large cream and beige rug, 78" x 120"
- 341. Small fringed rug/doormat, 18" x 30"
- 342. Red and blue floral rug, 24" x 46"
- 343. Blue and pink floral rug, 32" x 58"
- 344. Large red and blue patterned rug, 55" x 80"

ELECTRICAL ITEMS

- 345. Iceking table top fridge
- 346. Hotpoint washing machine
- 347. Dyson DC24 ball vacuum cleaner
- 348. Fridgemaster larder freezer
- 349. Cased Fender Squier Strat electric guitar and amp
- 350. De-humidifier

- 351. Nintendo Wii and accessories
- 352. Reproduction mahogany standard lamp
- 353. Bosch Maxx 6 washing machine
- 354. Frigidair freezer
- 355. Bosch Logixx dishwasher
- 356. Morphy Richards steam cleaner
- 357. Bissell power wash carpet shampooer
- 358. Bosch cordless vacuum cleaner
- 359. Bissell bagless cleaner
- 360. Panasonic 42" television
- 361. Art Deco chrome table lamp
- 362. Teak cased Dynatron vintage radiogram in working order

MIRRORS

- 363. Domed top bevelled wall mirror with pierced surround
- 364. Modern gilt framed rectangular wall mirror and a reproduction rectangular wall mirror
- 365. 2 large rectangular frameless wall mirrors with decorative back plate
- 366. Ornate 3 panel gilt dressing mirror
- 367. Modern gilt framed rectangular bevel edged wall mirror
- 368. Modern ornate gilt framed wall mirror
- 369. Edwardian oval mahogany framed wall mirror
- 370. Modern gilt framed rectangular wall mirror
- 371. Reproduction gilt framed rectangular wall mirror
- 372. Early 20th century oval frameless wall mirror
- 373. 3 various modern and reproduction wall mirrors
- 374. Art Nouveau oak framed overmantel mirror

PICTURES, PRINTS & PAINTINGS

- 375. 3 original paintings comprising oil of a winter scene, Edwardian watercolour of a cottage and figures and watercolour of a coastal scene signed Gerald S Lake
- 376. Steam railway print with Swindon station badge

Photographs of all lots available at www.UKAuctioneers.com



- 377. 3 reproduction posters Skegness, Tintin and Blackpool
- 378. Black and white print, south west view of Beauchief Abbey, Derbyshire, a black and white print of Scrivelsby Court after S Buck and a lithotint print of a girl and dog
- 379. Oil on board Summertime at Mollington by Eileen Baines 1967, pen and ink sketch of a ballerina and a signed watercolour of a river scene
- 380. Watercolour of Saltfleet Haven by L Porter
- 381. 5 sporting and other prints including Map of Fox Hunts in Britain, 3 hunting prints and a map of Lincolnshire
- 382. 4 original paintings comprising watercolour of Flatford Mill by Margaret Bernard, Victorian watercolour of marshland signed M Dupont, watercolour of woodland scene by Dulcie Whetham and another watercolour
- 383. 2 oils on canvas of country cottages by water with swans signed S J Cooper and a modern oil on canvas of mother and daughter waiting
- 384. 3 black and white prints of engravings and 2 modern samplers
- 385. 2 limited edition Robert Taylor Lancaster prints, one signed on the mount by Leonard Cheshire, the other by the artist
- 386. Victorian watercolour of a harvest scene signed Alfred Townsend 1890
- 387. 2 framed collections of Titanic postcards and photographs and fragment of coal recovered from the wreck with a certificate of authenticity
- 388. 6 colourful watercolours by Jennifer Abbott
- 389. 2 coloured prints, a hunting scene outside of a country alehouse after W Ward and Cries of London
- 390. 5 various coloured sporting prints comprising a matched framed series of racing and hunting scenes and Lionel Edwards Full Cry the Beaufort
- 391. 2 watercolours by W H Walker, Lake Maggiore and a country lane
- 392. 3 original paintings Victorian watercolour of a river scene dated 1884, watercolour Upper Mill Hanwell by Thomas Underhill and oil on board of a bridge scene
- 393. 2 watercolours of oriental boating scenes
- 394. 6 various prints of poultry
- 395. Quantity of motorcycle racing posters and photographs some signed including James Toseland
- 395A. Quantity of Horncastle and local prints etc
- 396. 3 various prints and a pine framed mirror

TOYS, DOLLS AND MODELS

- 397. Eleven various jigsaw puzzles
- 398. A Phillips 10" Challenge vintage globe on a Bakelite base
- 399. Six items of boxed Mainline, Hornby and Airfix 00-gauge model railway and a loose engine including three GWR engines and tender, three carriages etc
- 400. Eight boxed model fighter aircraft on stands (one damaged) including four Tornados and four Hawks, all in Royal Saudi Air Force livery
- 401. Various clockwork tin plate toys etc, Chinese and Czech
- 402. A child's vintage illustrated wooden block puzzle in its original box
- 403. A child's vintage toy carpentry tool box and tools
- 404. A boxed Meccano Set No. 6 (box damaged) and approximately 22 boxed Matchbox Models of Yesteryear and other reproduction model vehicles
- 405. Three boxed Burago Diamond Collection Smart Roadster model cars
- 406. A Fisher Price vintage toy garage
- 407. Boxed toys and vehicles comprising nine Britains agricultural vehicles including Case 300 tractor, Kuhn round baler etc and a Promenade bisque headed Charlotte doll
- 407A. A vintage Triang baby walker and handmade wooden pull along ride on aeroplane
- 407B. A crate containing a quantity of boxed model vehicles, Matchbox Yesteryear, Corgi Classics etc
- 407C. A collection of loose model vehicles, Corgi, Matchbox etc including Chitty Chitty Bang Bang, many Models of Yesteryear etc
- 408. A box of seven mohair teddy bears including Paddington, Wallace and Woodland bears etc
- 409. Two boxes of soft toys, grotesque puppets etc including Sunny Jim advertising doll
- 410. A vintage doll's house with hipped roof
- 411. A Gee Bee Toys vintage doll's house with gabled roof and contents
- 412. A vintage doll's house and bag of doll's house roof tiles
- 413. A large quantity of O Gauge model railway track
- 414. A box of loose OO Gauge model railway accessories including various buildings, rolling stock, track etc
- 415. A box of various Hornby O Gauge model railway including boxed points, right angle crossing, connection plates etc

416. A quantity of Hornby O Gauge model railway accessories including signals, tunnel, water tower etc
417. A Hornby O Gauge tin plate station and platform with Trent hanging sign
418. A Hornby O Gauge tin plate station, platform and foot bridge
419. Hornby O Gauge tin plate signal box and two level crossings
420. Eleven Hornby O Gauge boxed and loose open wagons
421. Three boxed Hornby O Gauge Passenger Brake vans, 209, 211 and 41
422. Five boxed Hornby O Gauge Passenger Coaches, 204, 205, 207, 245 and 248
423. Six boxed Hornby O Gauge Passenger Coaches, 201, 203, 206, 208, 247 and 249
424. Eight Hornby O Gauge livestock and other loose wagons
425. Four Hornby O Gauge fuel tankers, Royal Daylight (boxed), Esso and Shell
426. Six Hornby O Gauge loose passenger wagons
427. Three Hornby O Gauge loose Pullman carriages, Corsair, Aurora and Niobe
428. Five items of Hornby O Gauge rolling stock including freight wagons and crane
429. A wicker dolls cradle
430. A Victorian spoke wheeled doll's pram
431. An early 20th century doll's pushchair
432. An early 20th century spoke wheeled doll's pram
433. An early 20th century spoke wheeled doll's pram
434. A vintage Pedigree spoke wheeled doll's pram
435. Quantity of doll's accessories including Hoover upright vacuum cleaner, chairs, cribs and four-poster bed
436. Three large dolls, German bisque headed baby and girl doll with sleeping eyes and standing Rose Bud girl doll, c. 36" tall
437. Three bisque headed girl and baby dolls, all with sleeping eyes, Armand Marseille No. 7 & 3; a Heubach Köppelsdorf 996 with peacock basket chair and wooden rocking chair
438. A group of six various girl, lady and baby dolls including three Armand Marseille
439. Two bisque headed girl dolls, Heubach Köppelsdorf 25014 and Schoneau and Hoffmeister 914.10 (head repaired), c. 24" tall
440. Three bisque headed German girl dolls including Alt Beck & Gottschalk 1362 and Gebrüder Kühnlenz 165, c. 26" tall

- 441. Two German bisque headed dolls Simon & Halbig 126 and Armand Marseille tall girl, c. 26" tall
- 442. A box of various dolls, soft toys and accessories
- 443. A box of five various bisque headed and other girl, boy and baby dolls with bonnets
- 444. Three various baby dolls
- 445. A bespoke handmade horsehair rocking horse on a mahogany base made by Horder Bros. Shaftesbury (Est 100-150)
- 446. Four wooden model sailing boats including a galleon and three twin masted boats.
- 447. A wooden model single masted sailing barge and three miscellaneous wooden model boats
- 448. A large model wooden single masted sailing boat 'Spray', c. 32" tall
- 449. Two single masted wooden model boats, a yacht and sailing boat BIE64
- 450. A Triang Minic clockwork articulated lorry and trailer with key (Est 40)
- 451. A Triang Minic clockwork Vauxhall town coupe, blue with key (Est 25)
- 452. A Triang Minic clockwork Vauxhall town coupe, red with key (Est 25)
- 453. A Triang Minic clockwork tractor and trailer with key (Est 30)
- 454. A Triang Minic clockwork flatbed delivery lorry with key and a dustcart (missing rear lid) (Est 40)
- 455. Three Triang Minic clockwork racing cars (one damaged), plus spare wheel and tyres (Est 20-30)
- 456. A Corgi Ford 5000 tractor, Corgi trailer and Dinky farm rake (Est 20-30)
- 457. A Budgie Hansom cab with horse (one lantern loose) (Est 10-20)
- 457A. A Kayran horse drawn plough and four wheeled trailer with horse (Est 10-20)
- 458. Marx Toys vintage, Trumpton tin plate clockwork fireman climbing a ladder, Raised on a litho printed base, in working order (one ladder section missing) (Est 80 – 100)
- 459. A quantity of lead animals, mainly Britains, sheep and four goats, c. 41 in total (Est 20)
- 460. A quantity of lead Britains and Timpo cows, c. 29 in total (Est 30-40)
- 461. A quantity of lead farming figures, mainly Britains, c. 16 in total
- 462. A quantity of lead horses and carts including a Britains milk cart, a Charbens coster cart and approximately 18 various horses (Est 20)

- 463. A quantity of various lead farm poultry, dogs, gates, trees etc, mainly Britains, c. 60 pieces (Est 20)
- 464. A collection of Britains lead railway station staff and figures, some in original box including luggage trolley, luggage, bench etc, c. 30 pieces (Est 30-40)
- 465. Various miniature and grotesque dolls
- 466. A quantity of lead, mainly Britains, pigs, c. 28 in total (Est 20)
- 467. A Hornby O Gauge engine and tender LMS No.5600, with key (Est 30-50)
- 468. A large Hornby O Gauge locomotive LNER 1784 with key (Est 30-50)
- 469. A Hornby O Gauge engine and tender LNER 2710 with key (Est 30-50)
- 470. A Hornby O Gauge locomotive 1185 with key (Est 30-50)
- 471. A Hornby O Gauge engine, Great Western 5500 with key (Est 20-30)
- 472. A Hornby O Gauge engine, LMS 70 with key (Est 30-50)
- 473. A Hornby O Gauge engine, Great Western 6600 with key (Est 30-50)
- 474. A Hornby O Gauge engine and tender LMS 4312 with key (Est 30-50)
- 475. A Hornby O Gauge engine and tender LMS 2115 with key (Est 30-50)
- 476. A Hornby O Gauge engine and tender British Railways 50153 with key (Est 30-50)
- 477. Three Hornby O Gauge carriages, two Pullman with concertina connector, Arcadia and Iolanthe and an LMS 402 (Est 40-60)

JEWELLERY, COLLECTABLES, SILVER etc.

- 478. A cased vanity set, the silk lined interior stencilled Hamilton & Inches, Edinburgh comprising four brushes, comb (damaged) and mirror, in green enamel backs with London 1941 silver mounts (Est 30-50)
- 479. A quantity of ladies and gents wrist watches, vintage helix corkscrew etc
- 480. A sealed box of 50 King Edward Invincible cigars (Est 130-150)
- 481. Three various meerschaum carved pipes and cases
- 482. Vintage toy revolver
- 483. Four vintage car mascot bonnet badges, two enamelled Order of the Road, 39 year and 49 year driver, R.A.C Lincolnshire badge and AA badge 58924 D-R
- 484. Box of mixed ladies and gents wrist watches, pocket watches etc
- 485. Box of costume jewellery
- 486. Tray of costume jewellery

487. Tray of costume jewellery
488. Three turned wooden excise stamps, Rum (Oakham Brewery Rutland), Port and Gin and a Birmingham silver handled button hook
489. Three pocket watches and fob chain including Smiths Empire
490. An Alpina silver cased pocket watch and two Birmingham silver medallions
491. Four various pocket watches including a British WWII General Service Trade Pattern T34305XX, Smiths Empire etc
492. A pair of 9ct gold cuff links, another pair of cuff links and a pair of inset earrings
493. Nine boxed ladies and gents modern wrist watches
494. A pair of Paul Jardin Princess Collection earrings in presentation box
495. A Sheffield 1992 silver photograph frame, with profuse foliate embossed decoration, c. 6" tall x 8" wide
496. A Queen Elizabeth II 1977 Jubilee silver ingot
497. Two pairs of Birmingham silver pepperettes comprising an Art Nouveau 1915 pair, with shaped bodies on pedestal bases and a 1900 pair, with gadrooned bodies on pedestal bases, c. 2.68 oz (Est 20-30)
498. A pair of Birmingham circular 1918 silver lidded mustard pots, with pierced sides and blue glass liners and five various spoons, c. 2.38 oz (Est 20-30)
499. Set of four London 1900 silver salts with frilly edges on four ball feet, c. 3.22 oz (Est 30-50)
500. A Sheffield 1941 silver sauce boat with shaped edge on three pad feet, c. 3.42 oz (Est 30-50)
501. A quantity of silver flatware comprising various tea and coffee spoons and sugar ladle, c. 4.09 oz (Est 40-60)
502. A Birmingham 1946 silver 3-piece cruet set, in ovoid form on pedestal bases comprising salt, mustard and pepperette, with blue glass liners c. 6.26 oz (Est 70-90)
503. A Sheffield 1992 oval silver photograph frame, c. 7" x 5"
504. A Sheffield 1990 rectangular silver photograph frame with beaded decoration, c. 5" x 4"
505. A Sheffield 1992 ornate rectangular silver photograph frame, with embossed foliate decoration, c. 7.5" x 6.25"

Notes

ROBERT BELL & COMPANY

**CHARTERED SURVEYORS, AUCTIONEERS,
LAND AND ESTATE AGENTS**

Offices at: **Old Bank Chambers, Horncastle (01507) 522222**
19 Station Road, Woodhall Spa (01526) 353333
and **43 Silver Street, Lincoln (01522) 538888**



CHARTERED SURVEYORS

RICS Surveys
Mortgage Valuations
Drainage Plans
Project Management



LAND AGENTS

Rural Estate Management
Farm and Land Sales
Farm Management Advice
Forestry Advice and Sales
Tenant right and Annual Stocktake Valuations



RESIDENTIAL ESTATE AGENTS

Property Sales of all types
Country Houses
New Homes
Valuations for Purchase Probate etc.



COMMERCIAL PROPERTY AGENTS

Sales Valuations and Lettings
Commercial Offices and Industrial Property
Building Plots and Building Land
Planning Applications and Appeals
Rating Appeals



AUCTIONEERS

Antique and Household Furniture Sales
Live and Dead Stock Sales
Farm Implement Sales and Valuations
Appointed Auctioneers to the Lincoln Longwool Society



RESIDENTIAL LETTINGS AGENTS

Advice on Letting Individual Homes and Residential Estates
Drawing up Tenancy Agreements
Management and Rent Collection