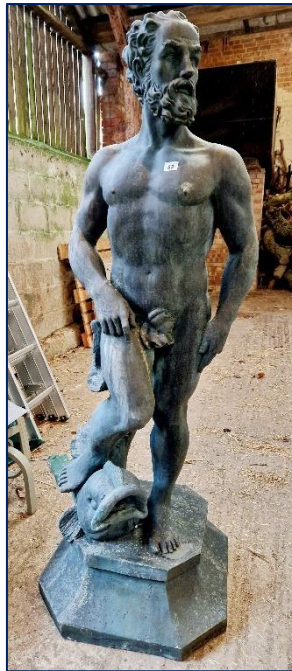


**Wednesday 27<sup>th</sup> March 2024**

**Sale by Auction of Period & Modern Furniture & Effects**

**BELL**  
ROBERT BELL & COMPANY

**CATALOGUE**  
FOR AN ONLINE AND IN PERSON AUCTION OF  
**PERIOD & MODERN**  
**FURNITURE & EFFECTS**



**TO BE HELD**  
**IN PERSON** at Stanhope Hall, Horncastle  
**and**  
**ONLINE** via [www.EasyliveAuction.com](http://www.EasyliveAuction.com)

Old Bank Chambers, Horncastle, Lincs. LN9 5HY  
Email: [auctions@robert-bell.org](mailto:auctions@robert-bell.org)

Sale Room – The Stanhope Hall, Boston Road,  
Horncastle LN9 6NF



[www.robert-bell.org](http://www.robert-bell.org)

[www.EasyliveAuction.com](http://www.EasyliveAuction.com)

Telephone: 01507 522222

# **\*\*\* CATALOGUE \*\*\***

for a

## **SALE BY AUCTION**

ONLINE & IN PERSON

on

**WEDNESDAY 27<sup>th</sup> MARCH 2024**

**9.30 am**

**Cover Photos – Lots 287, 63, 482, 329, 151, 3**

---

If you are unable to participate on Sale Day, our staff  
will be pleased to bid on your behalf.

*There is no charge for this service.*

### **2024 SALES**

#### **Period & Modern Furniture & Effects**

<b>Wednesday 31<sup>st</sup></b>	<b>January</b>
<b>Wednesday 27<sup>th</sup></b>	<b>March</b>
<b>Wednesday 22<sup>nd</sup></b>	<b>May</b>
<b>Wednesday 17<sup>th</sup></b>	<b>July</b>
<b>Wednesday 4<sup>th</sup></b>	<b>September</b>
<b>Wednesday 23<sup>rd</sup></b>	<b>October</b>
<b>Wednesday 11<sup>th</sup></b>	<b>December</b>

Online bidding - *EasyLiveAuction.com*

Commission bidding - Robert Bell & Company

In Person at Stanhope Hall, Horncastle

**For further information visit our website • [www.robert-bell.org](http://www.robert-bell.org)**

# OUR SYSTEM

---

**We hold our auction fixtures online via EasyliveAuction.com or join us in our Auction Room at Stanhope Hall, Horncastle for some live action and in-person bidding.**

## **Catalogue**

In the usual way, this will be available to view online; via our **online platform** at EasyliveAuction.com. In addition, limited unillustrated paper copies can be made available, on request to the auctioneers.

## **Bidding**

Shall be online, in person, by commission or telephone bid.

## **Online Bidding**

Buyers will need to pre-register with EasyliveAuction.com - please contact them direct for confirmation of terms. Alternatively, you may register for in-person bidding at our open viewing or at our Auction Room on Sale Day.

## **Absentee/Commission Bidding**

Commission and telephone bids must be left directly with the Auctioneers (Robert Bell & Company) up to 9 am on the morning of Sale. There is no charge for this service. All bids received, will be acknowledged.

## **Open Viewing**

**Site 2 on Tuesday 26<sup>th</sup> March 1-4 pm and Sale Day 8.30-10 am;**

The Old School Sale Room, Queen Street, Horncastle, Lincs. LN9 6BG

*The majority of goods will be available to view here*

**Site 1 on Tuesday 26<sup>th</sup> March 3-4 pm ONLY**

Please ask for location and directions

## **Car Parking**

There is no on-site parking at Site 2 (Queen Street) therefore please use The Wong (free) car park, accessed from the main A153 through Horncastle. There is a pedestrian short-cut through Bryant Close (opposite The Black Swan) leading to Croft Street which joins Queen Street, close to Site 2.

## **Payment**

Debit card, direct transfer or cash. No cheques. Telephone payments are accepted.

## **Collection, Postage & Shipping**

The auctioneers DO NOT offer an in-house postage and packing service. Lots may be collected in person by appointment however it is appreciated that online purchasers will not always find it possible or convenient to collect in person. If you wish to use your own courier, please do so, however we do not accept any courier who is not prepared to pack your item/s. Alternatively, the following specialist provider offers a direct bespoke service and is already familiar with auctioneers in the region:

**Pack & Send Lincoln** t. 01522 300220 e. lincoln@packsend.co.uk

Pack & Send do not deal in furniture and larger items, thus a purchaser must make their own arrangements by appointment with the auctioneers for the collection of furniture.

**Please Note: Due to the Easter break we would appreciate any lots located at Site 1 to be collected on Sale Day or Thursday 28<sup>th</sup> if at all possible.**

All lots are to be collected within **7 days** of the Sale date.

A charge will be incurred for items remaining thereafter.

# CONDITIONS OF SALE

*Please read before bidding*

1. The highest bidder shall be the buyer. Bidding shall be regulated by the Auctioneer. The Auctioneers reserve the right of rejecting any bid, bidding for, withdrawing, consolidating, dividing or altering the order of lots.
2. Buyer's Premium is chargeable on purchases at a rate of 15% plus VAT under the Auctioneers' Margin Scheme, subject to a minimum fee of £1 plus VAT per lot. There is no VAT on the lots themselves and VAT cannot be reclaimed either on the lots or on the commission.
3. Each lot, at the fall of the hammer, shall be at the sole risk and expense of the buyer and shall be paid for and removed within 7 days of the sale. However, no lot shall become the property of the buyer, or be removable until paid for. No items shall be removed on Sale Day.
4. The auction house does not offer an in-house postage and packing service. Lots may be collected in person by appointment, or alternatively buyers may use a courier service. The auctioneer will not accept any courier who is not prepared to pack the item/s they collect.
5. Terms: Payment by cash, direct transfer or by card in person or over the telephone. (**NB.** *no credit or business debit cards will be accepted*). No cheques thank you.
6. A buyer will not be allowed to retract his bidding. The Auctioneers will not recognise the transfer of any lot from one buyer to another nor make any alteration in the sale book in respect thereof.
7. The Auctioneers are acting only as Agents and have no personal knowledge as to the correctness or otherwise of the description of the property offered for sale. Each lot is sold with all defects and errors of description, if any. The purchaser is deemed to have inspected the lot he buys.
8. The Auctioneers shall be the sole arbitrators in all matters of dispute relating to these conditions, and their decision shall be final and binding.
9. *This auction is not required to comply with the requirements of the Members Accounts Regulations 1993 of the Royal Institution of Chartered Surveyors. No monies paid to the auction are covered by any scheme for the protection of clients' money operated by the Royal Institution of Chartered Surveyors.*

1. Two-wheeled car trailer metal framed with approx. 6' x 4' with 1" boarding
2. 5 various small sandstone grindstones approx. 35cm diameter average
3. 3 large sandstone grindstones, largest approx. 60cm in diameter
4. Large blue parasol with wooden pole
5. Qty of angling equipment including Sealey float, rods etc
6. Crombie and Hall green garden parasol with wooden pole
7. Qty of garden tools
8. Vintage drainage shovels etc
9. Qty of garden tools
10. Two Lincolnshire shafted thistle-spuds (one blade poor)
11. Qty of garden tools
12. Vintage wooden step ladders
13. 3 pairs of wooden step ladders
14. Two wheelbarrows
15. Garden parasols, chairs, tools etc
16. 2 sets of aluminium step ladders
17. Set of tall aluminium step ladders
18. Wooden extending ladder
19. Plastic garden bench, terracotta pots, tools etc
20. Vintage mangle on cast base with enamel top
21. Wire mesh and framed garden rocking bench
- 21A. Aluminium triple extending ladder c. 4.73 m extended
22. Stoneware flagon, tools, winch etc
23. Qualcast classic petrol 35S cylinder mower
24. Pair of car ramps
25. Two garden sprayers
26. Sack and wheelbarrow



27. Two garden weed bags and quantity of wire plant supports
28. Wheelbarrow, step ladder and workmate etc
29. 3 sets of tubular and aluminium step ladders
30. Two sets of metal step ladders
31. Set of 4 folding garden chairs
32. 4 bags of kindling
33. 4 bags of kindling
34. 4 bags of kindling
35. 4 bags of kindling
36. 4 bags of kindling
37. 4 bags of kindling
38. Aluminium milk churn
39. Miscellaneous roofing and drainage materials
40. Chillington sack barrow
41. Three glazed terracotta planters and three feet
42. Two shallow blue glazed terracotta planters
43. Large unglazed terracotta planter
44. Two chimney pots
45. Simulated bird bath and plinth
46. Plastic bird baths, simulated stone steppingstones etc
47. Qty of simulated stone garden figurines
48. Simulated stone classical lady figurine approx. 85cm tall
49. Two simulated stone Madonna figurines approx. 85cm tall
50. Resin Tang Dynasty collection bust from the Buddha collection
51. Seven various small terracotta planters
52. Qty of simulated stone Christmas Island garden busts
53. Qty of terracotta ewers and jars
54. Two blue glazed terracotta planters, feet and saucers
55. Pair and two others of glazed terracotta planters
56. Qty of simulated stone garden figures and planters, pot feet etc

57. Three simulated stone bulldog figures
58. Simulated stone Komodo Dragon
59. Various simulated garden figures and planters
60. Three various simulated stone garden figures
61. Two simulated stone garden figures and a pair of planters on feet
62. Two resin garden figures, gorilla and chimpanzee
63. Plastic classical male fountain figure approx. 160 cm tall
64. Plastic Art Deco female nude fountain on concrete plinth approx. 200cm tall including plinth
65. Plastic classical water carrier fountain approx. 155cm tall
66. Two pairs of coloured glazed terracotta planters
67. Large blue glazed terracotta planter
68. Quantity of coloured glazed terracotta planters
69. Two pairs of coloured glazed terracotta planters
70. A pair plus 2 others, glazed terracotta planters
71. Simulated stone dragon figure water feature
72. Two simulated stone cherub garden figures
73. Chimney pot
74. Two large glazed terracotta planters
75. Simulated stone terracotta planters, glazed pig etc
76. Metal and glass circular garden table with parasol and base

## **OUTDOOR EFFECTS AND MISCELLANEOUS Cont...**

**SITE 2**

77. Lifestyle portable gas heater
78. Folding canvas campaign bed
79. Quantity of Supermix stone cladding tiles etc (as new) approx. 16 packs
80. Tri-Cast coarse fishing pole holder and poles, two quiver tips tods 11' and 10', four vintage mahogany 'Nottingham' fly reels, fixed spool reels etc

81. Boxed bird feeder
82. Two Markman cordless drills and miscellaneous tools
83. Miscellaneous spanners and hand tools
84. Metal box of tools and two socket sets
85. Vintage pine wall box, toolbox, wine crate etc
86. Vintage galvanised Wigtownshire creamery pale and wicker potato molly
87. Vintage pine and plastic toolboxes, miscellaneous tools etc
88. Vintage potato scales with Tongs of Spilsby plaque
89. Karcher 402 pressure washer
90. Power Devil electric mower
91. Three mobility aids, 2 walkers and a wheelchair
92. Wrought iron demi-lune wall bracket with glass shelves
93. Cast iron pierced wall planter and canon ball
94. Quantity of coarse fishing equipment including Kriel landing and keep nets
95. Quantity of coarse and fly fishing rods
96. Electric concrete mixer
97. Set of four, as new metal and mesh garden armchairs
98. Carpenters vintage pine toolbox

---

**BOOKS, POSTCARDS, STAMPS etc****SITE 2**

99. Three boxes of 1970s Look & Learn: No 77, 232-299, 310-756 (missing approx. 30 of the total)
100. Two boxes of predominantly World War II aircraft volumes
101. Four boxes of volumes on British railway, predominantly diesel
102. Five boxes of railway volumes including James', timetables, tickets etc
103. Vinyl box of 7" singles including some 1980s
104. Vinyl case and box of 7" singles predominantly 1970s
105. Vinyl box of 7" singles predominantly 1970s



106. Two boxes of predominantly 1970s LPs and some 78s
107. Holy Bible Oxford University Press 1869 with gilt edge pages, some damage to spine
108. Qty of reference volumes and catalogues on medals, militaria and British badges
109. Box of books and DVDs on World War II and military campaigns
110. Various volumes and ephemera including Battle of Britain, Players cigarette album on TA uniforms etc
111. Five paper back volumes on Lincolnshire military history including Mareham Le Fen War Memorial, East Kirkby airfield etc
112. Various novels and hardback volumes including 17th century half calf bible
113. Various reference volumes including weapons and militaria
114. Four albums of world stamps
115. Two Salvation Army, Young Peoples Lesson Albums
116. Various Lincolnshire ephemera including Lincolnshire Show badges, South Wold Hunt meet appointments, Horncastle Fat Stock Show, last catalogue etc
117. Three albums of world stamps, various loose stamps, first day cover etc (mint Isle of Man issues)
118. Qty of football ephemera including Lincoln City programs 1990s, various issues of the Horncastle Town FC, the Wong weekend etc
119. Qty of vintage Meccano magazines, instructions No.3a and 5a manuals, two ABC British Railway guides etc
120. Qty of vintage motoring ephemera, first day covers etc
121. Various collectors items including 1972 FA centenary medal folders, scrap books, loose tea cards etc
122. Box of 125 editions of the Dandy Comic 1970 - 1976
123. Box of 65 vintage Sparky comics 1973 - 1977
124. Box of vintage movie ephemera etc

125. Quantity of mid-century and earlier loose GB postcards and approx. 107 in an album
126. Various volumes and ephemera predominantly 1970s motorcycle racing
127. Box of GB WWII aircraft prints etc
128. Quantity of train spotters' photographs etc
129. Collection of Snap-on tools; workshop calendars etc

## **PAINTINGS AND PRINTS**

---

130. Six modern prints of European cityscapes and seascapes
131. Seven modern prints including dog cartoons
132. Series of six prints of Egyptian scenes
133. Collection of various oriental watercolours and prints
134. Oval framed oriental watercolour of a lakeside scene with gilt highlights
135. Four black and white vintage Speedway photographs
136. Folio of various coloured and black & white cartoons and prints
137. Quantity of various motoring brochures and manuals, many American
138. Quantity of unframed watercolours, advertising posters etc
139. Three coloured hunting prints including Lionel Edwards 'The Grafton Hounds'
140. Five modern prints on Horncastle and Woodhall Spa history plus another floral print
141. Two David Shepherd prints of Rhinoceros and one of cattle The Orphans 394/950 on floral mounts
142. Series of three coloured sporting prints
143. George Wells - believed George Wells (1842 - 1888) Oil on canvas, two girls at a book, signed G. Wells mid right on the desk c. 49cm x 62cm

144. William Lee Hankey (1869 – 1952) oil on canvas Market Place Beauvais, signed lower left c.58cm x 48cm
145. Black and white oak framed print of a Georgian drinking scene
146. Coloured floral tapestry with oval frame and convex glass
147. John Pettitt coloured Limited Edition aviation print 'The Death of a Dinosaur' with crew members signatures on the mount
148. Two oils of Highland stags and a watercolour of a church in a winter landscape
149. Various aviation prints including two Coningsby Typhoon Squadron prints, Ray Chapman limited edition print 'Daring Dambusters' 24/50 signed on the mount

#### **CHINA, ORNAMENTS AND GLASSWARE**

---

150. Collection of nine Karl Ens porcelain exotic bird figurines, ranging from 19cm - 38cm tall
151. Collection of six Karl Ens porcelain Birds of Prey figurines ranging from 13cm - 30cm tall
152. Collection of seven Karl Ens porcelain water birds including Kingfisher, Heron etc ranging from 13cm - 27cm tall
153. Collection of eight Karl Ens porcelain songbird figurines including two groups - each on average 14cm tall
154. Collection of eight Karl Ens porcelain songbird figurines, ranging from 8 - 18cm tall
155. Collection of six mint boxed Border Fine Arts World of Beatrix Potter figures
156. Collection of eight mint boxed Border Fine Arts World of Beatrix Potter figures
157. Collection of six mint boxed Frederick Warne World of Beatrix Potter figures and enamel badges

158. A complete set of ceramic thimbles 'The Birds of Britain' with display stand
159. Royal Doulton boxed Palomino horse figurine
160. Boxed Border Fine Arts mint boxed Tale of Peter Rabbit Tableau celebrating 100 years 572/2002
161. A pair of Royal Crown Derby Imari candlesticks on serpentine square bases c. 27cm tall (hairline cracks to collar of one)
162. Collection of various gloss and bisque Geobel figurines including Monks, cruet, egg timer etc
163. Decoupage large butterfly vase under glass
164. Large plaster figurine of a horse
165. Large green glazed jardinière on stand with relief decoration approx. 133cm tall (damage repair to the jardinière)
166. Stoneware Mitchell White Bradford water filter, no lid, interior or tap
167. Stoneware and wooden wash dolly
168. Two large stoneware jugs approx. 37 cm tall
169. Meissen floral basket on putti support
170. Various ornamental ware including Wedgwood Hathaway floral vase, Royal Worcester, collectors teapot etc
171. Masons Angling series Meat Platter the Bailiff; Staffordshire poppy jug; oriental vase; pottery jug etc
172. Barge ware tea pot Mrs Hiley Tatenhill Lock 1879 (no lid) and Royal Doulton Charles Sibson Posts and Rail plate
173. Pair of small Staffordshire spaniels and Cartltonware Rouge Royale two handled vase
174. Doulton Watteau blue and white water jug and Delph baluster form vase
175. Collection of six Lucerne lady figurines
176. Collection of nine onion and beetroot face jars including Sadler
177. Quantity of Johnson Bros Indian Tree dinner ware

178. Shelley Floral part coffee service and Art Deco tea service
179. Collection of oriental and decorative tea ware
180. Edelstein six service tea set in green and cream
181. Quantity of Kiln Craft tableware
182. Quantity of Barratts Delphatic china red and white hunting dinner ware
183. Maypole Dairy Co. Glazed Earthenware One-Handled Butter Crock and a terracotta pancheon
184. Three Staffordshire figurines, two Belleek vases etc
185. Qty of decorative teaware including Aynsley Cottage garden
186. Collection of 22 ceramic tiles depicting the tarot major arcana
187. Quantity of Royal Doulton Carnation teaware etc
188. Quantity of commemorative and collectors mugs
189. Qty of Imari ware including various gold plates, covered jar etc
190. Qty of Denby Greenwheat dinnerware
191. Quantity of Royal Albert Brigadoon tea and dinnerware
192. Collection of approx. 14 Leonardo and other lady figurines
193. Collection of various unnamed character jugs
194. Collection of various character jugs including Beswick Barnaby Rudge
195. Collection of Hummel Goebel figurines
196. Various Colour Box and Marys bears figures
197. Various vintage Babycham and others, glasses and stemware
198. Boxed Royal Scott decanter and Edinburgh glasses
199. Boxed set of Watford crystal glasses, decanter and biscuit jar
200. Three cut glass bowls and two decanters
201. Rouge and gilt stem glasses and bowl
202. Glass bowl and pierced oriental ivorine balls and eggs
203. Two taxidermy covers on wooden plinths
204. Pair of painted floral glass vases
205. Onyx comport with agate, onyx and crystal eggs

## **COLLECTORS ITEMS incl. METALWARE, TREEN etc...**

---

206. Glass bowl of seashells, coral etc
207. Collection of seashells including a conch (damaged)
208. Various vintage collectables including Mustad Nails crate, various bottles etc
209. Various alcohol including 2 bottles of sherry, wine etc
210. Baize lined wicker cutlery basket with various EPNS cutlery etc
211. Vintage Spong bean slicer, butter pats and thermometer
212. Two plaster reclining figures
213. Collection of Indian Eastern treen and ceramic ware including Buddha, Ebony Elephants, Rhinoceros etc
214. Colman's Mustard reproduction advertising mirror
215. Victorian copper samovar
216. Treen ware comprising a treen wall box and large carved key holder
217. Various military and other uniform including kit bag, kilt, caps etc
218. Various leather and fur, moccasins, bags etc
219. Various Victorian and other copperware including trivet, funnels, samovar etc
220. Mixed lot including boxed Royal Scott crystal glasses, hip flasks etc
221. Kitchenware comprising Viking scales & weights and a copper kettle
222. Metal ware comprising copper watering can, metal biplane and candlestick
223. Handheld fire screen with oak barley twist handle and pictorial panels
224. Treen bowl, fruits and bird figurine
225. Quantity of vintage treen kitchenware including butter mounds, salting tub etc
226. Remi Martin wooden barrel games compendium
227. Various treen wear including folding cake stands, cigar box etc
228. Decorative oriental lacquered tableware including covered jars with fish, tray etc



229. Chinese lacquered drinking set with cocktail shaker, and bowls with fish interior
230. Large mahogany brass bound writing box, missing interior
231. Victorian walnut brass bound writing box with slope, pen tray and ink wells
232. Two Victorian, rosewood and mahogany writing boxes, one with brass inlay monogrammed EAE, various damage to the interiors
233. Victorian brass bound writing box, no slope with ink wells
234. Marquetry tabletop writing slope with fitted interior
235. Two various boxes comprising a gaming set in the form of a book, sewing set and artists mahogany case
236. Victorian mahogany writing box with slope, no ink wells
237. Modern Salter kitchen scales with brass imperial weights
238. Various ornamental brass ware
239. Various metal ware including ornamental brass stand, letter rack, EPNS candelabra etc
240. Two cast metal boot pull beetles
241. Two vintage OXO tins and a pair of Victorian candlesticks
242. Brass ware comprising brass gong and two leather martingales
243. Small metal dome lidded trunk with brass fittings inscribed C. Bell
244. Small spelter figure of a horse and greyhound approx. 16 cm tall
245. Two silvered metal ware figures of cockerels
246. Bronze figure of a greyhound on slate plinth approx. 29cm tall
247. Mixed lot comprising cast spaniel door stop, pewter comport etc
248. Various ebonised dressing table ware
249. Quantity of loose EPNS Sheffield cutlery
250. Canteen of Sheffield EPNS stainless and chrome cutlery
251. Oval EPNS gallery tray and various metal tableware
252. EPNS 3-piece tea service with gadrooned decoration and an octagonal form hot water jug

## **CLOCKS, COLLECTABLES AND MISCELLANEOUS**

---

253. Edwardian brass fender with pierced gallery finials, approx. 145cm internal width
254. Art Nouveau brass fender with scrolling supports approx. 163cm internal width
255. Early 20th century oak fender approx. 97cm internal width
256. Early 20th century oak baluster carved smokers stand with glass ashtray
257. Pair of rope twist fire dogs and companions
258. Victorian cast iron range door
259. Stroud & Son Wolverhampton oak butter churn
260. Victorian brass bucket with handle and a saucepan
261. Ladies shooting stick
262. Two carved wooden walking sticks
263. Three wooden and ebonised walking sticks, one inscribed FH Gosling and two vintage rulers
264. Two riding crops, blackthorn cane and shepherd's crook
265. Thorn walking stick with antler handle and yellow metal mount
266. Four various shepherd's crooks and an antler mount thumb stick
267. Brass hanging scales on mahogany base with fitted drawer
268. Fencing equipment including two masks, two foils etc
269. Photographic and camera equipment including 35 mm lenses, camcorder, Snowdon photography books etc
270. Pair of vintage Huet 10x50 field glasses with leather case; pair of Bresser binoculars with lens cap and digital camera
271. Various photographic equipment including two polaroid cameras, digital camera etc
272. Collection of six Philip Harris laboratory microscopes
273. Two pairs of binoculars 10x50, missing 1 lens cap and Clubman 10x50 with lens caps and a vintage Brownie 44A camera

- 274. Four vintage grease guns
- 275. Three vintage meters including Universal Ivo meter etc
- 276. Four various early 20th century oak cased mantel clocks
- 277. Four various early 20th century and Art Deco oak cased mantel clocks
- 278. Two Art Deco oak cased mantel clocks including Smiths
- 279. Walnut and mahogany cased Vienna wall clock with mask faced finials
- 280. Vintage box suitcase and ladies vanity case
- 281. Vintage 'The Traveller' travel trunk with metal banding and fitted interior
- 282. BLH motorcycle wear
- 283. Two academic gowns
- 284. Brass column oil lamp on square base approx. 82cm tall incl. glass chimney
- 285. Oil lamp on pierced brass base with floral glass reservoir approx. 60cm tall including chimney

### **JEWELLERY, EPHEMERA, MILLITARIA etc**

---

- 286. Art Deco green enamelled back brush and mirror set and tortoiseshell comb
- 287. A Victorian brass bound and Coromandel vanity case, by I.J. Mechi 112 Regent Street London, fully fitted with complete London 1869 silver topped jars and bottles; lower secret drawer with complete mother of pearl handled manicure set; second side secret drawer with mahogany lining; velvet lined inner lid with mirror; brass lock by Chubb and brass cartouche to the lid monogrammed MAFD (wear to cartouche)
- 288. Mahogany glove box and various collector items including enamel badges, eastern dagger etc
- 289. Motoring ephemera including early 20th century enamel badges and tea cards in an album

290. Three London 1938 silver ARP badges; two George VI WWII King's badges for loyal service and RAF pendent
291. Five WWI silver war badges, No's B177725; 444603; B77705; 516334 and 130996
292. A quantity of various British regimented cap badges
293. A quantity of various British regimented cap badges
294. Seven Lincolnshire Regiment cap badges
295. A GB WWI Military medal group of three George V Military Medal; War & Victory medals awarded to BDR A.E. Davey 6651 Royal Artillery with various copy documents
- 295A. Collection of military buttons, whistle etc
296. Collection of vintage foil football badges etc
297. Quantity of vintage motoring badges incl AA, BMC drivers' club etc
298. Quantity of proof crowns, aviation badges etc
299. Vintage Webley Junior .177 air pistol with box and pellets
300. A quantity of loose GB Victorian pennies, world coins, Bisto presentation £1 notes etc
301. Metal cigarette box and various GB crowns and coins
302. Cased gents Sekonda and Rotary wristwatches
303. A silver cased ladies jewelled pocket watch (missing glass); cameo and other yellow metal and enamelled brooches
304. A sterling silver necklace; Birmingham silver charm bracelet; a child's Birmingham 1973 silver bangle and quantity of costume jewellery
305. Three ladies 9ct gold inset rings; a 9ct gold bracelet (damaged); Sekonda pocket watch etc
306. Five items of ladies gold jewellery, an 18ct insert ring; 9ct band ring; 9ct insert band ring; damaged band ring and heart pendant, inserted with pearls
307. Two 9ct gold ladies inset rings, heart bracelet, rolled gold heart shaped locket and 9ct necklace

- 308. Quantity of ladies and gents quartz wristwatches
- 309. Jewellery box, costume jewellery and various wrist and pocket watches
- 310. Various quartz wristwatches, cigarette lighters etc
- 311. A wooden box of various costume jewellery. ladies and gents wristwatches, Bolero pearls etc
- 312. Quantity of costume jewellery, Jasper Conran purse etc
- 313. A leather-bound jewellery box, containing a quantity of costume jewellery, Parker mottled blue fountain pen etc
- 314. Wooden jewellery box containing various coins, crowns, vintage fountain pen etc
- 315. Jewellery box and costume jewellery
- 316. Quantity of costume jewellery

## **SILVER**

---

- 317. A collection of silver mounted dressing tableware, comprising a Birmingham Art Deco four-piece brush and mirror set (various damage) and two stoppered bottles with Birmingham collars
- 318. Three silver and enamel lidded Art Deco dressing table jars and bottle, Birmingham 1932 in green; London 1932 with blue knob and London 1928 blue bottle (mishapen)
- 319. A Birmingham 1924 silver Masonic 1914-1918 Hall Stone Jewel, inscribed to Bro. E H Riddle, with Lodge No. 2697 St Michael le Querne Lodge
- 320. A Birmingham 1948 silver christening tankard, with etched foliate decoration inscribed DRH 23/09/45 c. 8cm tall and 2.9 ozs
- 321. Two pieces of silver tableware, a London 1897 six slot wire toast rack and Birmingham 1931 tea strainer with drip tray c. 5.27 ozs

322. A pair of London 1921 silver dinner place name holders, in the form of owls, with inset eyes c. 3.5 cm tall and 1.29 ozs gross and silver handled fruit knife
323. A quantity of silver flatware, including a London 1806 fiddle pattern table spoon monogrammed GHW; an Edinburgh 1819 fiddle pattern sauce ladle; Birmingham 1923 pickle fork; various mustard and teaspoons and Birmingham 1901 handled shoehorn etc (c. 14pcs and 9.21 ozs)
324. Three various silver decorative spoons and quantity of white metal tableware
325. A Birmingham 1927 silver three-piece cruet set, in baluster form on circular pedestal bases, comprising salt, pepperette and mustard, on an EPNS triangular tray with beaded edging
326. A set of four Birmingham 1939 silver napkin rings with engine turned decoration monogrammed W (one dented and slightly mishapen) c. 1.1 ozs
327. A set of six London 1814 silver fiddle pattern teaspoons c. 3.16 ozs
328. A set of six London 1843 silver fiddle pattern teaspoons c. 3.80 ozs
329. A London 1965 four-piece tea service, comprising teapot, hot water jug, cream and sugar with gadrooned borders and Usher of Lincoln retail stamp c. 63.63 ozs gross

## **TOYS, GAMES AND DOLLS**

---

330. Boxed vintage Pelham puppet Walt Disney Pluto
331. Collection of vintage Britains plastic farm animals, dog run etc
332. Collection of vintage Britains and other cast metal farm toys etc including two-wheeled trap, grey Fergie tractor etc
333. Vintage girl doll with sleeping eyes and 5 boxed Franklin Heirloom dolls (as new)
334. 5 boxed Franklin Heirloom dolls (as new)



335. Boxed Leonardo Elite girl porcelain doll
336. Two cases of dominoes and a scoreboard
337. Collection of Tri-ang and Hornby OO gauge, boxed and loose engines and rolling stock
338. Quantity of Tri-ang and Hornby railway accessories including track, transformer, buildings etc
339. Boxed games, railway and racing sets
340. Model fire engine, Micky Mouse figure etc
341. Quantity of diecast WWII planes etc
342. Various models and toys including Lego K'nex, railway etc
343. Various Lego Technic and Meccano kits
344. Quantity of loose vintage Dinky and other play worn vehicles
345. Four various boxed Burago model cars
346. Various predominantly games including monopoly, final fantasy etc
347. Collection of Corgi and other boxed articulated lorry's etc
348. Various toys and models including loose models, Airfix Avro Vulcan etc
349. Quantity of war hammer figures, paints etc
350. Quantity of die cast and plastic model aircraft
351. Quantity of Matchbox, Lledo and other collectors vehicles
352. Quantity of collectors dolls and an illuminated display case
353. Quantity of as new jigsaw puzzles, Disney doll etc
354. Quantity of vintage games including Go, Risk, Modernite boxed carpet bowl set etc
355. Vintage toy shot gun
356. Boxed dolls Cinderella brass bed
357. Collection of nine Leonardo and other porcelain headed dolls
358. Collection of seven Leonardo and other porcelain headed dolls
359. Collection of four porcelain headed boxed dolls
360. Vintage dolls wicker crib and highchair
361. Various soft toys and teddy bears including DSN, Ty etc

- 362. Collection of seven various boxed porcelain headed dolls
- 363. Eight various boxed Barbie dolls
- 364. Various doll accessories and toys including as new pram, crib, highchair etc

## **ELECTRICALS**

---

- 365. A pair plus three others, modern brass table lamps
- 366. Modern brushed steel desk lamp and glass shade
- 367. Art Deco oak standard lamp
- 368. Mahogany standard lamp with turned column
- 369. Panasonic TX-L32S10BA LCD television
- 370. 2 Logik 22" LED televisions
- 371. Hacker vintage record player with Garrard turntable
- 372. Hotpoint inverter motor washing machine
- 373. Creda simplicity tumble dryer
- 374. Refrigerator
- 375. Bosch larder freezer
- 376. Hotpoint Future FZS175 larder freezer
- 377. IceKing small chest freezer
- 378. Hotpoint tumble dryer
- 379. Vax and G-tech carpet shampooer/carpet cleaners
- 380. Amazon fire tablet, working order, factory reset
- 381. Panasonic TX-24C00B LCD television
- 382. Dyson DC50 upright vacuum cleaner
- 383. Nutool 1600W pressure washer
- 384. Dimplex electric stove heater with remote
- 385. Vax 6131 multi vax with accessories
- 386. Panasonic TX-43HX580B LED television

## MIRRORS

---

- 387. Modern circular mosaic effect wall mirror
- 388. Reproduction ornate pieced plaster wall mirror
- 389. Three various modern rectangular wall mirrors
- 390. Modern metal framed cheval mirror
- 391. Small rectangular mahogany framed toilet mirror with turned finials and supports
- 392. Edwardian mahogany oval toilet mirror on serpentine base and drawers
- 393. Early 20th century oak framed wall mirror with bevelled plate
- 394. Ornate reproduction wall mirror
- 395. Modern rectangular gilt framed wall mirror

## FURNITURE

---

- 396. Edwardian distressed dining chair
- 397. 19th century pine, bow backed corner wall cupboard with panelled doors
- 398. Edwardian elm pot cupboard with inner shelf
- 399. Two wicker bedside cabinets
- 400. Victorian pine rectangular three plank-top country table
- 401. Pine three-tier plate rack
- 402. Painted pine stool and child's swivel desk chair
- 403. Elm bar stool stamped 1938 A&H
- 404. Modern mahogany oval occasional table with gadrooned border on splayed feet
- 405. Vono folding baize topped card table with box
- 406. Modern solid light oak dining suite comprising extending rectangular table and four upholstered chairs

407. A late Victorian mahogany dining suite, comprising a D-ended extending table on tapering square legs to spade feet and castors (with two spare leaves) and set of eight (6+2) bar splat back dining chairs, with upholstered seats on turned tapering legs
408. Mahogany framed pole screen on reproduction base with needlepoint floral panel
409. Two modern oak floor standing corner cabinets
410. Modern hardwood dining suite comprising rectangular table and six wheat ear splat back dining chairs
411. Retro style swivel wicker, leatherette and chrome tub chair
412. Set of four modern wooden and chrome kitchen chairs
413. Set of four modern spindle back kitchen chairs
414. Edwardian mahogany bar splat back dining chair with damaged sprung seat
415. Set of eight 20th century oak rush seated dining chairs with turned stretchers
416. Set of six reproduction balloon back mahogany dining chairs with upholstered seats on baluster turned legs
417. Set of four mahogany Hepplewhite style pierced back dining chairs
418. American style pressed panel nursing chair
419. Art Deco mahogany display cabinet on cabriole legs to ball and claw feet (crack to glass)
420. Pair of vintage three-tier oak glazed bookcases with sliding doors
421. Two modern tiled top occasional tables
422. Early 20th century mahogany two-tier jardinière stand with relief carved panels
423. Modern mahogany effect demi lune two-tier side table
424. Set of four vintage Ercol style fleur-de-lis wheelback kitchen chairs
425. Pair of wheelback kitchen chairs
426. Early 20th century mahogany tub elbow chair with pressed panel seat

427. Mahogany spindle back open elbow chair on turned support
428. Elm pierced splat back Windsor chair with crinoline stretcher (reduced in height)
429. Early 20th century oak cabinet with geometric relief supports on bobbin turned legs
430. Reproduction mahogany three-tier open book case with open shelves and upper drawers
431. Reproduction mahogany narrow bureau on a base of four drawers
432. Modern pine cupboard with shelved interior
433. Modern mahogany nest of three tables and occasional two-tier table with single drawer
434. Stag Minstrel sideboard with three drawers including cutlery over a cupboard base
435. Modern mahogany glazed display cabinet
436. Mid-century oak bureau with relief fall front to a base of three drawers
437. Vintage pine blanket box with candle box and iron loop handles (1 missing)
438. Modern pine open shelf cabinet
439. Mid-century walnut cased HMV gramophone with mirrored back on cabriole legs
440. Modern pine Devonport
441. Large dark oak coffer with relief panel front and two drawers to the base
442. Early 20th century pine straight front chest of two over three drawers with ceramic bun handles
443. Small Indian carved stand with ivorine inlay
444. Two modern hardwood rectangular occasional tables
445. Early 20th century oak bible box with relief carved panels and tin liner on bun feet
446. Modern pine straight front chest of two over two drawers

447. Camel stool with leather seat
448. Rocking camel stool with leather cushion and handles
449. Modern pine desk with bank of three drawers to one side
450. Childs ebonised chair with rush seat
451. 19th century mahogany chest of three graduating drawers to bracket feet
452. Reproduction mahogany three-tier washstand with single drawer and turned supports
453. Early 20th century walnut and oak fire screen with tapestry panel
454. Reproduction mahogany rectangular writing table with leatherette insert, three frieze drawers on tapering turned fluted legs to brass cup feet
455. Modern hardwood chest with metal banding
456. Victorian pine rectangular drop leaf table with single drawer on turned legs
457. Mid-century oak draw leaf dining table with cross stretches and turned legs
458. Matching pair of reproduction serpentine fronted chests of four drawers, in yew and mahogany
459. Stained pine three-tier wall mounted plate rack
460. Mahogany three-tier wall mounted plate rack
461. Modern circular stained dining table
462. Vintage teak gate leg dining table
463. Yew and elm pierced splat back Windsor chair with turned stretcher
464. Modern hardwood dressing table with three drawers and chest of two drawers
465. Late Victorian oak writing slope on stand
466. Modern pine side cabinet with painted front, three drawers and cupboard
467. Modern painted chest of two over two drawers



- 468. Modern light oak sideboard with two cupboards, part fitted
- 469. Modern retro effect chrome and glass side stand with six drawers
- 470. Steel gun cabinet in wooden housing
- 471. Chateau collection oak four-piece bedroom suite, comprising chest of four drawers, narrow chest of six drawers and a pair of three drawer bedsides all with flush/secret upper drawers
- 472. Modern hardwood five-tier open bookcase
- 473. Mahogany framed rectangular hearth stool with geometric pattern tapestry top
- 474. Bentley designs premier collection hardwood chest of seven drawers
- 475. Two mid-century elm framed upright square retail/collector's display cabinets, with steel lever turn handles and manufacturers internal ivory labels for Dudley & Co Ltd. Showcase manufacturers, Hathaway, London N7
- 476. Modern oak dresser with three-tier plate rack over a base of two drawers and cupboards
- 477. Modern pine towel rail
- 478. Victorian pine dresser, the plate rack with four lower drawers over a base of six drawers and cupboards
- 479. Modern pine dresser
- 480. Early 20th century oak two-tier jardinière stand
- 481. Late Victorian elm spindle back elbow chair with deep scallop seat on turned legs and stretchers
- 482. Edwardian mahogany framed deep seated upholstered armchair on castors
- 483. Sherbourne electric recliner armchair
- 484. Cane four-piece conservatory suite comprising settee, two chairs and glass topped occasional table

# ROBERT BELL & COMPANY

**CHARTERED SURVEYORS, AUCTIONEERS,  
LAND AND ESTATE AGENTS**

Offices at: **Old Bank Chambers, Horncastle (01507) 522222**  
**19 Station Road, Woodhall Spa (01526) 353333**  
and **43 Silver Street, Lincoln (01522) 538888**

---



## **CHARTERED SURVEYORS**

RICS Surveys  
Mortgage Valuations  
Drainage Plans  
Project Management



## **LAND AGENTS**

Rural Estate Management  
Farm and Land Sales  
Farm Management Advice  
Forestry Advice and Sales  
Tenant right and Annual Stocktake Valuations



## **RESIDENTIAL ESTATE AGENTS**

Property Sales of all types  
Country Houses  
New Homes  
Valuations for Purchase Probate etc.



## **COMMERCIAL PROPERTY AGENTS**

Sales Valuations and Lettings  
Commercial Offices and Industrial Property  
Building Plots and Building Land  
Planning Applications and Appeals  
Rating Appeals



## **AUCTIONEERS**

Antique and Household Furniture Sales  
Live and Dead Stock Sales  
Farm Implement Sales and Valuations  
Appointed Auctioneers to the Lincoln Longwool Society



## **RESIDENTIAL LETTINGS AGENTS**

Advice on Letting Individual Homes and Residential Estates  
Drawing up Tenancy Agreements  
Management and Rent Collection



Old Bank Chambers,  
Horncastle,  
Lincs. LN9 5HY  
Email: [auctions@robert-bell.org](mailto:auctions@robert-bell.org)

[www.robert-bell.org](http://www.robert-bell.org)

Tel: 01507 522222